

CHORD - NOMENCLATURE - SCALES

These are the most common symbols for each chord category and the suggested scale

MAJOR CHORDS C / Cmaj7 / CΔ / CΔ7 / CM7 / Cmaj9 / Cmaj13



Ionian

MINOR CHORDS C- / C-7 / Cm / Cm7 / Cm9 /



Dorian

DOMINANT CHORDS C7 / C9 / C11 / C13



Mixolydian

C7b9



Diminished half / whole tone

C7#9



Altered

HALF DIMINISHED CHORDS Cø / Cø7 / Cm7b5 / C-7b5



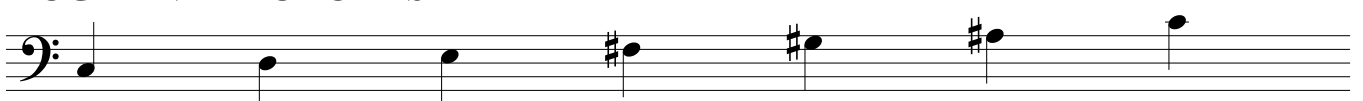
Locrian

DIMINISHED CHORDS C° / Cdim / C°7 / Cdim7



Diminished whole / half tone

AUGMENTED CHORDS C7+ / C7+5 / Caug / C7(#5#4)



Whole tone