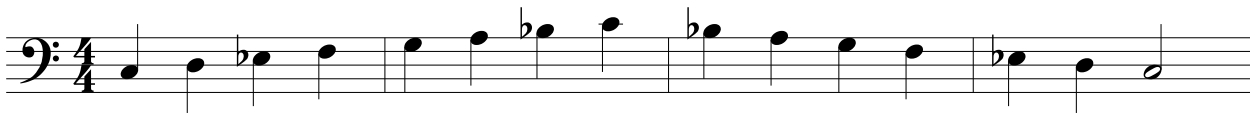


12 Dorian Scales on the Cycle of 4ths

Alexandre Silvério

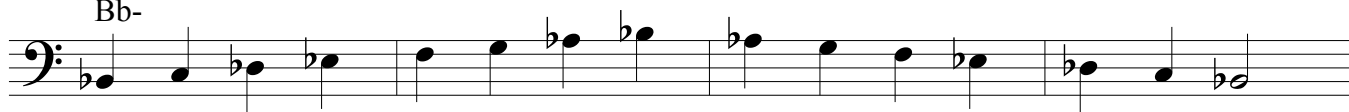
C-



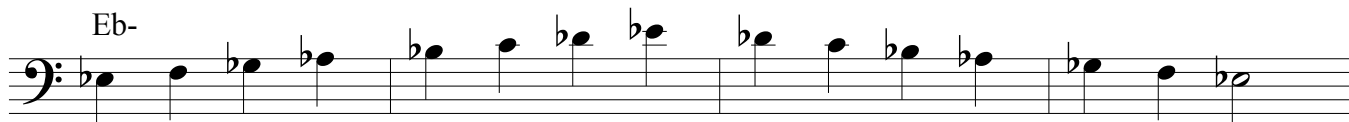
F-



Bb-



Eb-



Ab-



Db-



F#-



B-



E-

A musical staff in bass clef showing the E- Dorian scale. The notes are E2, F#2, G2, A2, B2, C3, D3, E3, F#3, G3, A3, B3, C4, D4, E4. The scale is written in a four-measure format with quarter notes.

A-

A musical staff in bass clef showing the A- Dorian scale. The notes are A2, B2, C3, D3, E3, F#3, G3, A3, B3, C4, D4, E4, F#4, G4, A4. The scale is written in a four-measure format with quarter notes.

D-

A musical staff in bass clef showing the D- Dorian scale. The notes are D2, E2, F2, G2, A2, B2, C3, D3, E3, F#3, G3, A3, B3, C4, D4. The scale is written in a four-measure format with quarter notes.

G-

A musical staff in bass clef showing the G- Dorian scale. The notes are G2, A2, B2, C3, D3, E3, F#3, G3, A3, B3, C4, D4, E4, F#4, G4. The scale is written in a four-measure format with quarter notes.

A musical staff in bass clef showing the C- Dorian scale. The notes are C2, D2, E2, F2, G2, A2, B2, C3, D3, E3, F#3, G3, A3, B3, C4, D4. The scale is written in a four-measure format with quarter notes.

A musical staff in bass clef showing the F- Dorian scale. The notes are F2, G2, A2, B2, C3, D3, E3, F#3, G3, A3, B3, C4, D4, E4, F#4, G4. The scale is written in a four-measure format with quarter notes.

A musical staff in bass clef showing the Bb Dorian scale. The notes are Bb2, C3, D3, E3, F#3, G3, A3, Bb3, C4, D4, E4, F#4, G4, Ab4, Bb4. The scale is written in a four-measure format with quarter notes.

A musical staff in bass clef showing the Eb Dorian scale. The notes are Eb2, F2, G2, A2, B2, C3, D3, Eb3, F3, G3, Ab3, Bb3, C4, D4, Eb4, F4. The scale is written in a four-measure format with quarter notes.

A musical staff in bass clef showing the Ab Dorian scale. The notes are Ab2, Bb2, C3, D3, Eb3, F3, G3, Ab3, Bb3, C4, D4, Eb4, F4, G4, Ab4. The scale is written in a four-measure format with quarter notes.

