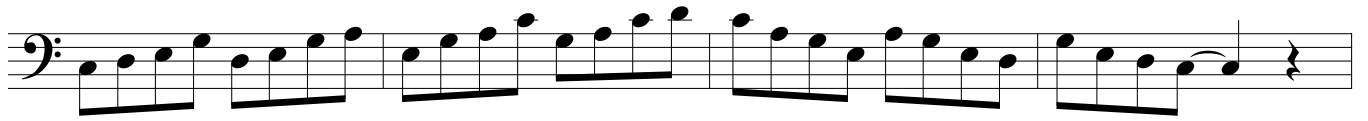
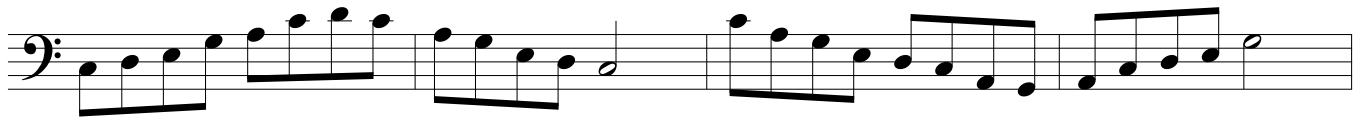
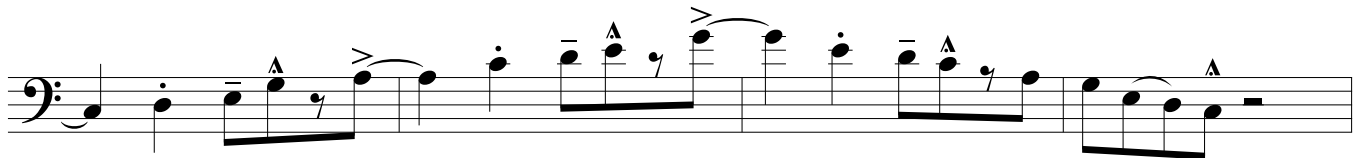
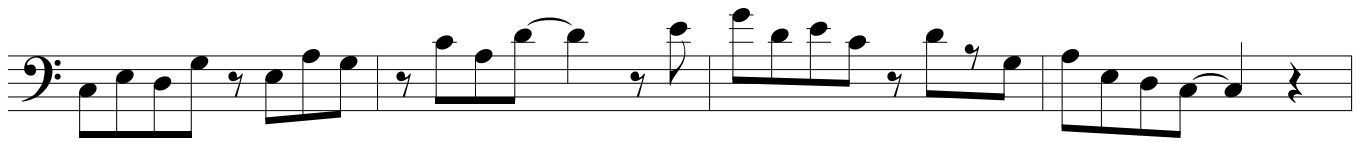
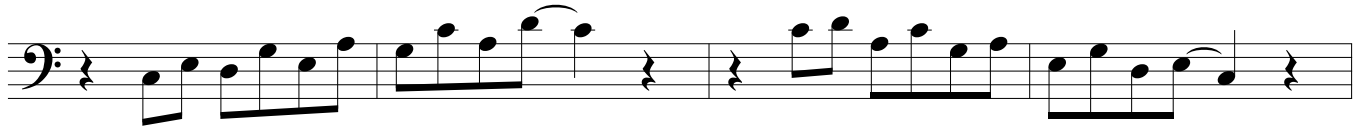


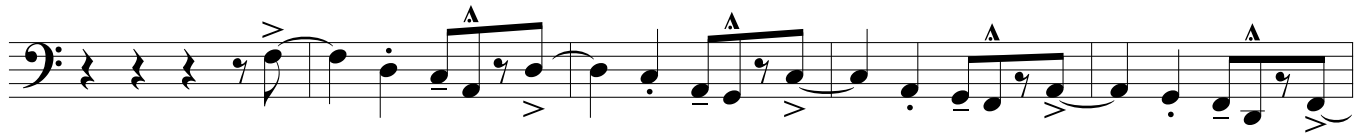
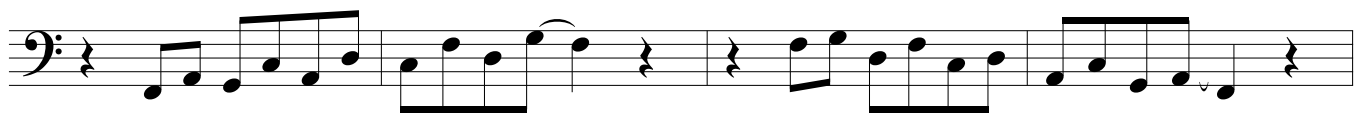
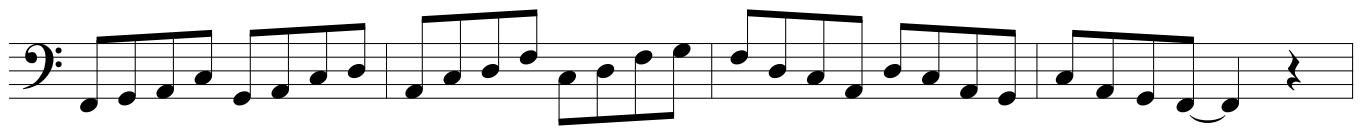
Major Pentatonics

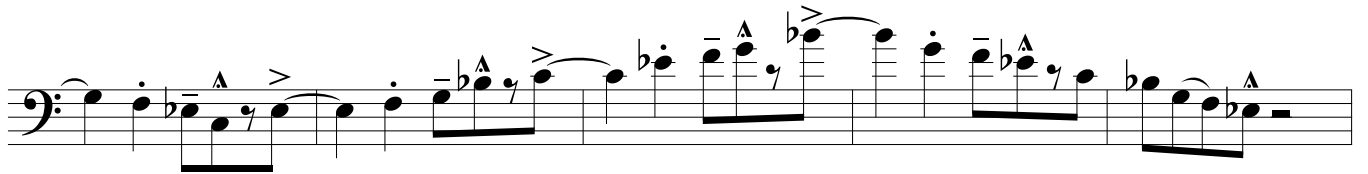
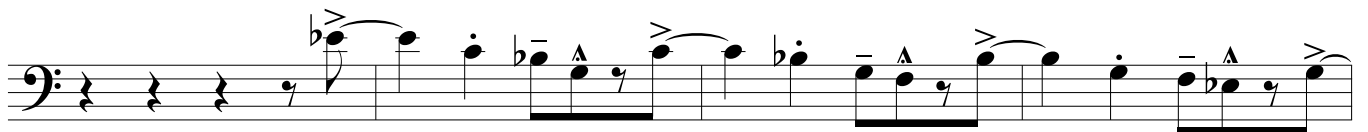
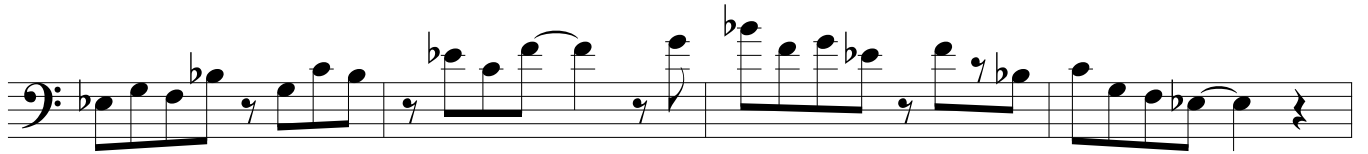
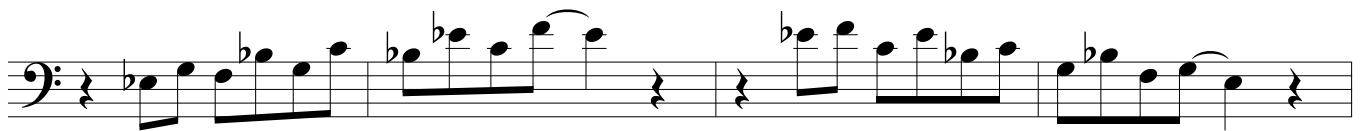
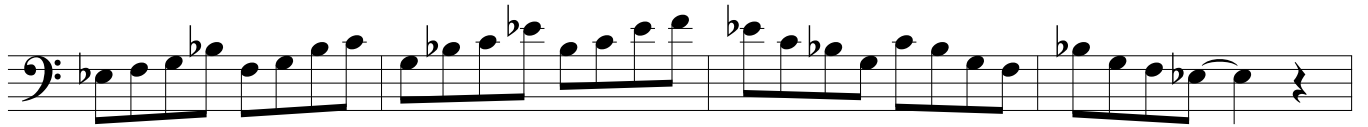
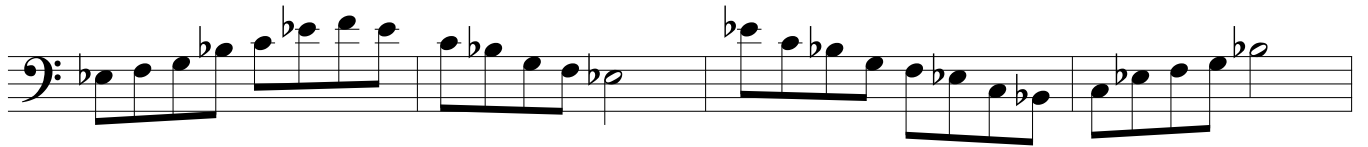
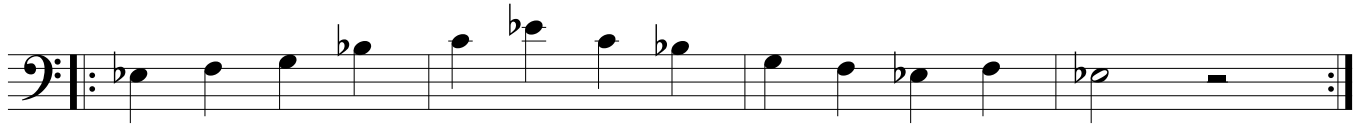
Studies

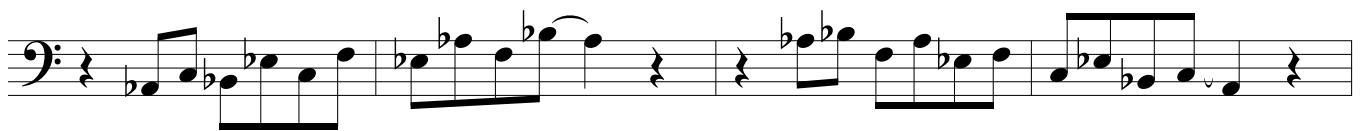
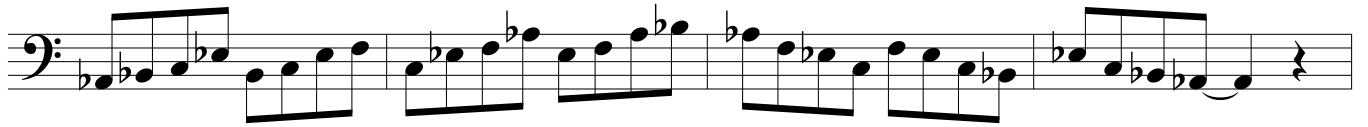
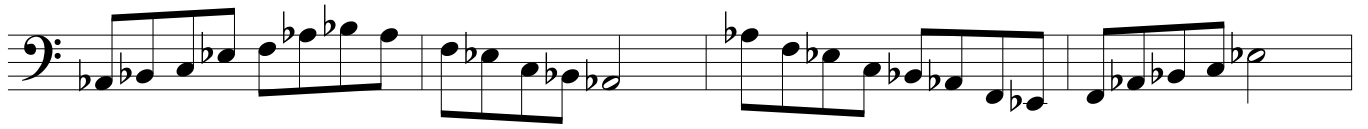


3rds









First musical staff showing a sequence of notes in bass clef, including flats and naturals, ending with a repeat sign.

Second musical staff showing a sequence of notes in bass clef, including flats and naturals.

Third musical staff showing a sequence of notes in bass clef, including flats and naturals, ending with a quarter rest.

Fourth musical staff showing a sequence of notes in bass clef, including flats and naturals, with a quarter rest at the end.

Fifth musical staff showing a sequence of notes in bass clef, including flats and naturals, with a quarter rest at the end.

Sixth musical staff showing a sequence of notes in bass clef, including flats, naturals, and accents (>).

Seventh musical staff showing a sequence of notes in bass clef, including flats, naturals, accents (>), and an accent (^) mark.

